

Архангельск (8182)63-90-72
Астана (7172)727-132
Астрахань (8512)99-46-04
Барнаул (3852)73-04-60
Белгород (4722)40-23-64
Брянск (4832)59-03-52
Владивосток (423)249-28-31
Волгоград (844)278-03-48
Вологда (8172)26-41-59
Воронеж (473)204-51-73
Екатеринбург (343)384-55-89
Иваново (4932)77-34-06

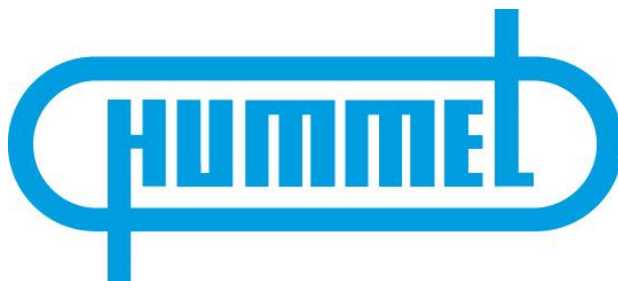
Ижевск (3412)26-03-58
Иркутск (395)279-98-46
Казань (843)206-01-48
Калининград (4012)72-03-81
Калуга (4842)92-23-67
Кемерово (3842)65-04-62
Киров (8332)68-02-04
Краснодар (861)203-40-90
Красноярск (391)204-63-61
Курск (4712)77-13-04
Липецк (4742)52-20-81
Киргизия (996)312-96-26-47

Магнитогорск (3519)55-03-13
Москва (495)268-04-70
Мурманск (8152)59-64-93
Набережные Челны (8552)20-53-41
Нижний Новгород (831)429-08-12
Новокузнецк (3843)20-46-81
Новосибирск (383)227-86-73
Омск (3812)21-46-40
Орел (4862)44-53-42
Оренбург (3532)37-68-04
Пенза (8412)22-31-16
Россия (495)268-04-70

Пермь (342)205-81-47
Ростов-на-Дону (863)308-18-15
Рязань (4912)46-61-64
Самара (846)206-03-16
Санкт-Петербург (812)309-46-40
Саратов (845)249-38-78
Севастополь (8692)22-31-93
Симферополь (3652)67-13-56
Смоленск (4812)29-41-54
Сочи (862)225-72-31
Ставрополь (8652)20-65-13
Казахстан (772)734-952-31

Сургут (3462)77-98-35
Тверь (4822)63-31-35
Томск (3822)98-41-53
Тула (4872)74-02-29
Тюмень (3452)66-21-18
Ульяновск (8422)24-23-59
Уфа (347)229-48-12
Хабаровск (4212)92-98-04
Челябинск (351)202-03-61
Череповец (8202)49-02-64
Ярославль (4852)69-52-93

www.hummel.nt-rt.ru || hma@nt-rt.ru



Технические характеристики на системы защиты кабелей

Модели

Пластиковая трубная защита, металлическая трубная защита, металлическая трубная защита Pro, арматура металлическая, арматура пластиковая, металлическая арматура Pro.

Reliable protection for cables

In industry, cables and wires are exposed to exceptional loads. Heat and cold, tensile and compressive loads, and wear-and-tear cause damage to cables and can result in malfunctions and loss of production. HUMMEL AG cable protection conduits provide reliable protection. Like a chameleon, the cable protection range is extremely versatile.

The Polyamide range and the galvanised steel protective tubing of the metal range offer suitable solutions for every application. A wide range of fittings makes it easy for planners and designers to find the right answer for every requirement.

Polyamide

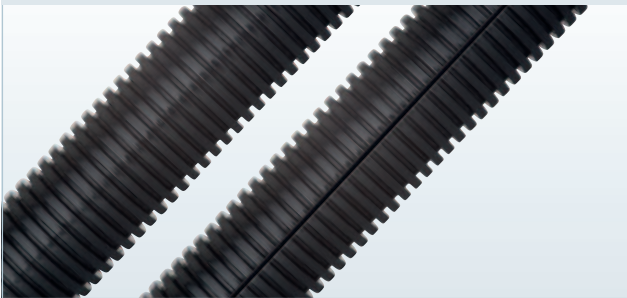
- // **Polyamide-Conduit** – the flexible polyamide cable conduit
- // **Polyamide-Fitting** – cable conduit for Polyamide-Conduit, made of galvanised steel

Metal

- // **Metal-Conduit** – multi-layer variants for heavy loads
- // **Metal-Fitting** – fittings for Metal-Conduits, designed for every type of installation
- // **Metal-Conduit Pro** – ideal for metal protective conduits
- // **Metal-Fitting Pro** – fittings for Metal-Conduit Pro, for exceptionally robust usage



Polyamide-Conduit ▶ 4



Polyamide cable conduits are characterised by their particularly high degree of flexibility. Whether in the standard or slotted version, even extremely mobile applications are no problem for Polyamide-Conduits. The large number of matching fittings and accessories provide solutions for all conceivable installation situations.

Metal-Conduit / Metal-Fitting ▶ 20



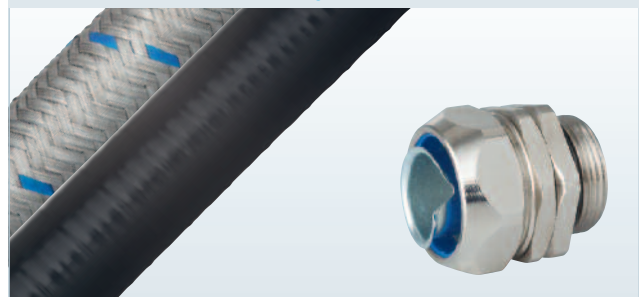
The Metal range of protective cable conduits are particularly-resistant to mechanical stresses. The conduit pipes made of galvanized steel are able to withstand high pressure loads. Matching metal fittings complete the range, ensuring, that the system is 100% industrial grade.

Polyamide-Fitting ▶ 6



A large number of fittings and matching accessories make the Polyamide-Conduit series to a well-engineered overall system. Thereby planers and installers are up to all assembly situations. With this professional protection improvised single solutions are things of the past.

Metal-Conduit Pro / Metal-Fitting Pro ▶ 24



Metal-Conduit Pro offers a safe protection against heat and cold, intense mechanical loads and abrasion. The conduits pipes are designed as multi-layer variants. They are available with PVC-Coating or exterior metal braiding. Fittings of the Metal-Fitting Pro series provides perfect matching for all Metal-Conduits of Serie Pro.

POLYAMIDE CABLE CONDUIT

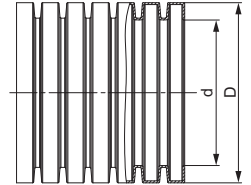
Polyamide-Conduit



Material	Polyamide
Operating Temperature	-40 °C – +120 °C (-40 °F – +248 °F)
Colours	grey (RAL 7031), black (RAL 9005)

RoHS

Advice:
// raw material according to UL 94



Size DN	d mm	D mm	R mm	Number grey	Number black
6	6,5	10	15	1.510.0600.14	1.510.0601.14
10	10	13	25	1.510.0900.14	1.510.0901.14
12	12	15,8	35	1.510.1100.14	1.510.1101.14
14	14,2	18,4	35	1.510.1300.14	1.510.1301.14
17	16,5	21,2	40	1.510.1600.14	1.510.1601.14
23	23	28,4	45	1.510.2100.14	1.510.2101.14
29	29	34,5	55	1.510.2900.14	1.510.2901.14
37	36	42,5	65	1.510.3600.14	1.510.3601.14
50	48	54,5	80	1.510.4800.14	1.510.4801.14

POLYAMIDE CABLE CONDUIT

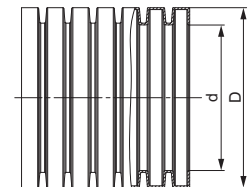
Polyamide-Conduit Slit



Material	Polyamide
Operating Temperature	-40 °C – +120 °C (-40 °F – +248 °F)
Colours	grey (RAL 7031), black (RAL 9005)

RoHS

Advice:
// raw material according to UL 94



Size DN	d mm	D mm	R mm	Number grey	Number black
6	6,5	10	15	1.527.0600.00	1.527.0601.00
10	10	13	25	1.527.0900.00	1.527.0901.00
12	12	15,8	35	1.527.1100.00	1.527.1101.00
14	14,2	18,4	35	1.527.1300.00	1.527.1301.00
17	16,5	21,2	40	1.527.1600.00	1.527.1601.00
23	23	28,4	45	1.527.2100.00	1.527.2101.00
29	29	34,5	55	1.527.2900.00	1.527.2901.00
37	36	42,5	65	1.527.3600.00	1.527.3601.00
50	48	54,5	80	1.527.4800.00	1.527.4801.00

Polyamide Cut



Material: Housing made of plastic / metal, antiskid rubber handle

Colour: red

Advice:
// Tool for easy, exact and safe cutting of Polyamide conduits

Cutting range	fits to DN	Number
0 – 26 mm	0 – 17	1.503.2600.00
0 – 63 mm	0 – 50	1.503.6300.00

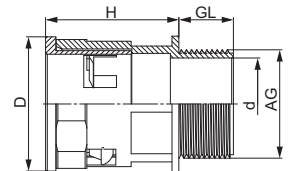
Polyamide-Fitting



Material	Polyamide
Protection category	IP 55
Operating Temperature	-30 °C – +80 °C (-22 °F – +176 °F)
Colours	grey (RAL 7031), black (RAL 9005)

RoHS

Advice:
 // raw material according to UL 94

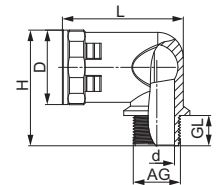


AG	d mm	D mm	GL mm	H mm	mm	fits to DN	Number grey	Number black
M 12	6,9	18,7	11	26	15	6	1.533.1200.50	1.533.1201.50
M 16	10,8	21,7	11	26	18	10	1.533.1600.51	1.533.1601.51
M 16	10,9	26	11	26,5	20	12	1.533.1600.50	1.533.1601.50
M 20	14,7	28	11	31	23	14	1.533.2000.51	1.533.2001.51
M 20	15,2	32	13	33	27	17	1.533.2000.50	1.533.2001.50
M 25	18,7	39,5	16	39	34	23	1.533.2500.50	1.533.2501.50
M 32	25,7	46,5	16	43	40	29	1.533.3200.50	1.533.3201.50
M 40	32,7	55,5	16	45,5	50	37	1.533.4000.50	1.533.4001.50
M 50	51,4	67,5	16	47,5	62	50	1.533.5000.50	1.533.5001.50
PG 7	6,9	18,7	11	26	15	6	1.533.0700.14	1.533.0701.14
PG 9	10,3	21,7	11	26	18	10	1.533.0900.14	1.533.0901.14
PG 11	13,3	26	11	26,5	20	12	1.533.1100.14	1.533.1101.14
PG 13,5	15,3	28	11	31	23	14	1.533.1300.14	1.533.1301.14
PG 16	16,6	32	13	33	27	17	1.533.1600.14	1.533.1601.14
PG 21	22,3	39,5	16	39	34	23	1.533.2100.14	1.533.2101.14
PG 29	31,7	46,5	16	43	40	29	1.533.2900.14	1.533.2901.14
PG 36	40,5	55,5	16	45,5	50	37	1.533.3600.14	1.533.3601.14
PG 48	51,7	67,5	16	47,5	62	50	1.533.4800.14	1.533.4801.14



Material	Polyamide
Protection category	IP 55
Operating Temperature	-30 °C – +80 °C (-22 °F – +176 °F)
Colours	grey (RAL 7031), black (RAL 9005)

Advice:
 // raw material according to UL 94



AG	d mm	D mm	GL mm	H mm	L mm	fits to DN	Number grey	Number black
M 12	8,2	18,7	11	36,3	35,7	6	1.535.1200.50	1.535.1201.50
M 16	10,8	21,7	11	37,3	38,5	10	1.535.1600.51	1.535.1601.51
M 16	10,9	26	11	41	43,8	12	1.535.1600.50	1.535.1601.50
M 20	14,7	28	11	44	46	14	1.535.2000.51	1.535.2001.51
M 20	15,2	32	13	51,5	51	17	1.535.2000.50	1.535.2001.50
M 25	18,7	39,5	16	61,2	64,3	23	1.535.2500.50	1.535.2501.50
M 32*	25,6	46,5	16	69,2	70,9	29	1.535.3200.50	1.535.3201.50
M 40*	32,7	55,5	16	78,2	88,6	37	1.535.4000.50	1.535.4001.50
M 63*	55,2	67,5	16	91,2	95	50	1.535.6300.50	1.535.6301.50
PG 7	8,2	18,7	11	36,3	35,7	6	1.535.0700.14	1.535.0701.14
PG 9	10,3	21,7	11	37,3	38,5	10	1.535.0900.14	1.535.0901.14
PG 11	13,3	26	11	41	43,8	12	1.535.1100.14	1.535.1101.14
PG 13,5	15,3	28	11	44	46	14	1.535.1300.14	1.535.1301.14
PG 16	16,6	32	13	51,5	51	17	1.535.1600.14	1.535.1601.14
PG 21	22,4	39,5	16	61,2	64,3	23	1.535.2100.14	1.535.2101.14
PG 29*	31,7	46,5	16	69,2	70,9	29	1.535.2900.14	1.535.2901.14
PG 36*	40,5	55,5	16	78,2	88,6	37	1.535.3600.14	1.535.3601.14
PG 48*	51,7	67,5	16	91,2	95	50	1.535.4800.14	1.535.4801.14

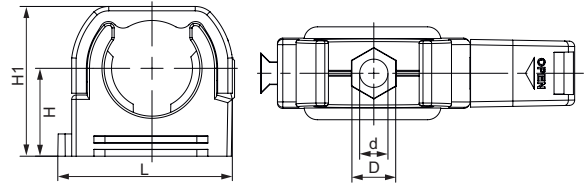
* on request

FITTINGS POLYAMIDE

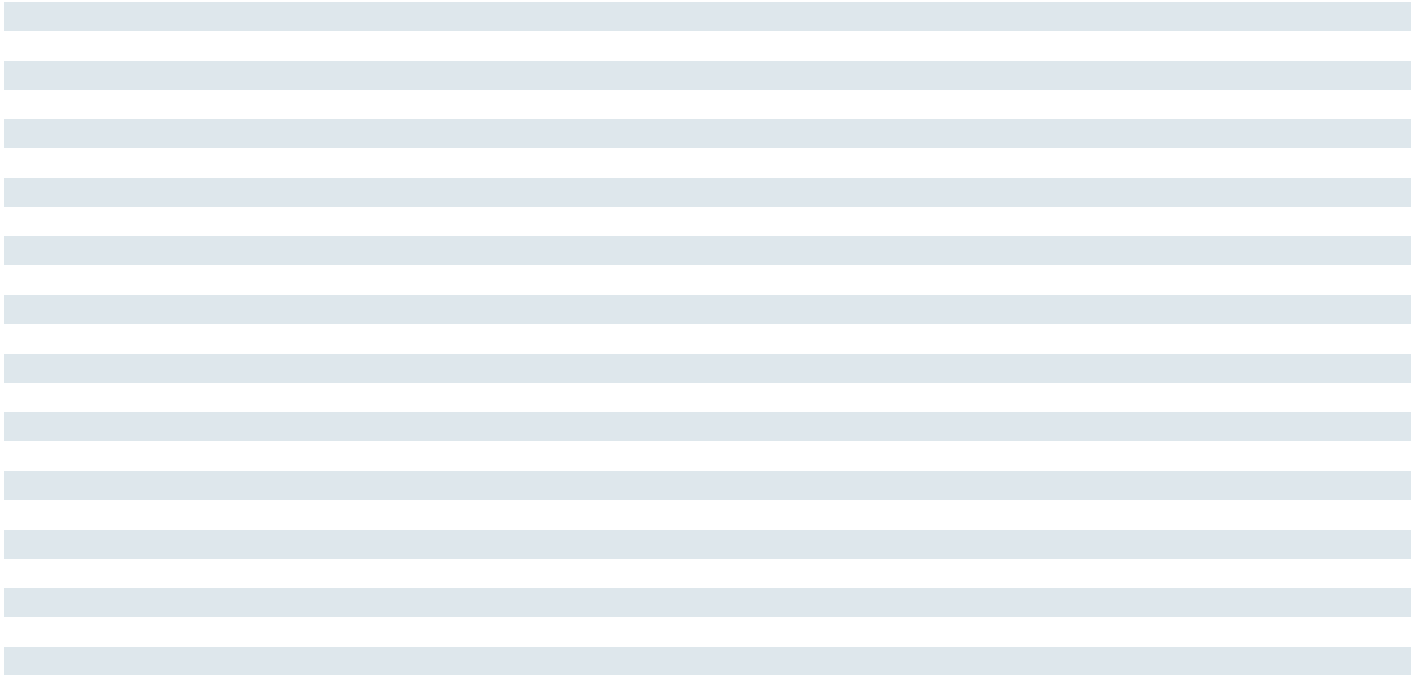
Polyamide-Fitting Clip



Material	Polyamide
Operating Temperature	-30 °C – +80 °C (-22 °F – +176 °F)
Colours	black



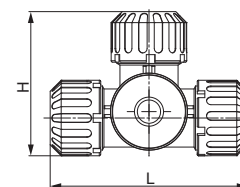
Size DN	d mm	D mm	L mm	H mm	H1 mm	fits to DN	Number black
DN10	5	7	28,7	15,75	27,5	10	1.534.0901.00
DN12	5,3	8,3	29,8	13,1	24	12	1.534.1101.00
DN14	5,3	8,5	35,2	17,75	29,3	14	1.534.1401.00
DN17	5,3	8,5	40,2	19,75	33,2	17	1.534.1601.00
DN23	5,3	8,7	52,6	23,5	40,5	23	1.534.2101.00
DN29	6,5	11	60,7	27	48	29	1.534.2901.00
DN37	6,5	11	69	30,4	57	37	1.534.3601.00
DN50	6,5	11	87	37,9	71	50	1.534.4801.00



Polyamide-Fitting T



Material	Polyamide
Protection category	IP 67
Operating Temperature	-40 °C – +120 °C (-40 °F – +248 °F)
Colours	black



Size DN	L mm	H mm	fits to DN	Number black
DN10	50	68,5	10	1.536.0901.00
DN12	50,5	69,5	12	1.536.1101.00
DN17	58	80	17	1.536.1601.00
DN23	71	95	23	1.536.2101.00
DN29	84	109	29	1.536.2901.00

Polyamide-Conduit

Polyamide-Fitting

Metal-Conduit / Metal-Fitting

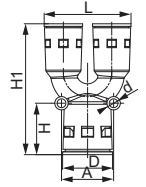
Metal-Conduit Pro / Metal-Fitting Pro

FITTINGS POLYAMIDE

Polyamide-Fitting Y



Material	Polyamide
Protection category	IP 55
Operating Temperature	-40 °C – +120 °C (-40 °F – +248 °F)
Colours	black



Size DN	d mm	D mm	A mm	H mm	H1 mm	L mm	fits to DN	Number black
DN10/06/06*	5	21,2	21	32,7	69,3	28,2	10/06/06	1.537.0901.00
DN12/10/10	5,5	22,3	25	31	74	42	12/10/10	1.537.1101.00
DN17/12/12	6,5	28	32	32	85	51	17/12/12	1.537.1601.00
DN23/17/17	6,5	36,4	38	38	90,5	63,8	23/17/17	1.537.2101.00
DN29/23/23	6,5	43	45	37	106	76,8	29/23/23	1.537.2901.00
DN37/29/29*	6,5	52,5	53,5	48,3	125,7	95,9	37/29/29	1.537.3601.00
DN50/37/37*	6,5	66,5	64	53	129	109,4	50/37/37	1.537.4801.00

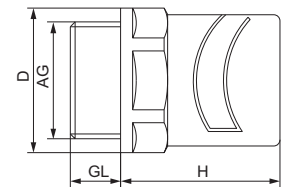
* on request

Polyamide-Fitting N

Metr., PG, NPT



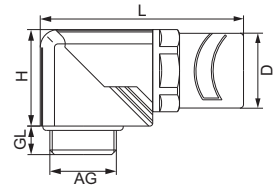
Material	Polyamide
Protection category	IP 54 with O-Ring with fixed conduit mounting IP 65
Operating Temperature	-20 °C – +80 °C (-4 °F – +176 °F)
Colours	grey (RAL 7031), black (RAL 9005)



AG	D mm	GL mm	H mm	mm	fits to DN	Number grey	Number black
M 16 x 1,5	20	8	23	17	10	1.511.1600.50	1.511.1601.50
M 20 x 1,5	26,5	9	28	24	14	1.511.2000.50	1.511.2001.50
M 25 x 1,5	38,5	11	32	35	23	1.511.2500.50	1.511.2501.50
M 32 x 1,5	46	11	35	42	29	1.511.3200.50	1.511.3201.50
PG 9	19	8	23	17	10	1.511.0900.14	1.511.0901.14
PG 11	23	8	25	21	12	1.511.1100.14	1.511.1101.14
PG 13,5	26,5	9	28	24	14	1.511.1300.14	1.511.1301.14
PG 16	30	10	29	27	17	1.511.1600.14	1.511.1601.14
PG 21	38,5	11	32	35	23	1.511.2100.14	1.511.2101.14
PG 29	46	11	35	42	29	1.511.2900.14	1.511.2901.14
PG 36	54,5	13	41	50	37	1.511.3600.14	1.511.3601.14
PG 48	70	14	46	64	50	1.511.4800.14	1.511.4801.14
NPT 3/8"	19	15	23	17	10	1.511.3800.70	1.511.3801.70
NPT 1/2"	30	13	29	27	17	1.511.1216.70	1.511.1217.70
NPT 3/4"	38,5	13	32	35	23	1.511.3400.70	1.511.3401.70
NPT 1"	46	15	35	42	29	1.511.1000.70	1.511.1001.70



Material	Polyamide
O-Ring	NBR
Protection category	IP 54 with fixed conduit mounting IP 65
Operating Temperature	-20 °C – +80 °C (-4 °F – +176 °F)
Colours	black (RAL 9005)



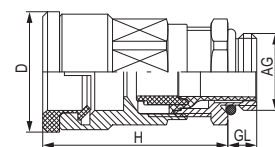
AG	D mm	GL mm	H mm	L mm	mm	fits to DN	Number
M 16 x 1,5	20	8	23	43	19	10	1.513.1601.50
M 20 x 1,5	26,5	9	30,5	52	24	14	1.513.2001.50
M 25 x 1,5	38,5	11	40	70	33	23	1.513.2501.50
M 32 x 1,5	46	11	51,5	83	42	29	1.513.3201.50
PG 9	19	8	23	43	19	10	1.513.0901.14
PG 11	23	8	27	48	22	12	1.513.1101.14
PG 13,5	26,5	9	30,5	52	24	14	1.513.1301.14
PG 16	30	10	32,5	56	27	17	1.513.1601.14
PG 21	38,5	11	40	70	33	23	1.513.2101.14
PG 29	46	11	51,5	83	42	29	1.513.2901.14
NPT 3/8"	19	15	23	43	19	10	1.513.3801.70
NPT 1/2"	30	13	32,5	56	27	17	1.513.1217.70
NPT 3/4"	38,5	13	40	70	33	23	1.513.3401.70
NPT 1"	46	15	51,5	83	42	29	1.513.1001.70

Polyamide-Fitting DUO-Ms

Metr., PG



Material	Nickel plated brass
Clamping insert	Polyamide
Seal	NBR
Protection category	IP 68 – 10 bar / IP 69K (NEMA 6 – 150 PSIG) on the cable gland
Operating Temperature	-40 °C – +100 °C (-40 °F – +212 °F)



AG	∅ mm	GL mm	H mm	D mm	mm	fits to DN	Number
M 16	05–10	6	36	23	20/20	10	1.547.1610.50
M 16	03–07	6	36	23	20/20	10	1.547.1610.51
M 20	10–14	6	39,5	25	24/22	12	1.547.2012.50
M 20	07–12	6	39,5	25	24/22	12	1.547.2012.51
M 20	10–14	6	40,5	29	28/24	14	1.547.2014.50
M 20	07–12	6	40,5	29	28/24	14	1.547.2014.51
M 25	13–18	7	44,5	30	30/30	17	1.547.2517.50
M 25	09–16	7	44,5	30	30/30	17	1.547.2517.51
M 32	18–24	8	50,5	39	40/40	23	1.547.3223.50
M 32	13–20	8	50,5	39	40/40	23	1.547.3223.51
M 40	22–31	8	56,5	45	50/50	29	1.547.4029.50
M 40	20–26	8	56,5	45	50/50	29	1.547.4029.51
M 50	32–36	9	57,5	52	57/57	37	1.547.5037.50
M 50	25–31	9	57,5	52	57/57	37	1.547.5037.51
M 63	37–44	10	60,5	52	68/64	50	1.547.6350.50
M 63	29–35	10	60,5	52	68/64	50	1.547.6350.51
PG 11	05–10	6	36	23	20/20	10	1.548.1110.01
PG 11	03–07	6	36	23	20/20	10	1.548.1110.15
PG 13,5	6–12	6,5	39,5	25	24/22	12	1.548.1312.01
PG 13,5	5–9	6,5	39,5	25	24/22	12	1.548.1312.15
PG 16	10–14	6,5	40,5	29	28/24	14	1.548.1614.01
PG 16	07–12	6,5	40,5	29	28/24	14	1.548.1614.15
PG 21	13–16	7	44,5	30	30/30	17	1.548.2117.01
PG 21	09–16	7	44,5	30	30/30	17	1.548.2117.15
PG 29	18–22	8	50,5	39	40/40	23	1.548.2923.01
PG 29	13–20	8	50,5	39	40/40	23	1.548.2923.15
PG 36	22–28	8	56,5	45	50/50	29	1.548.3629.01
PG 36	20–26	8	56,5	45	50/50	29	1.548.3629.15
PG 42	32–36	9	57,5	52	57/57	37	1.548.4237.01
PG 42	25–31	9	57,5	52	57/57	37	1.548.4237.15
PG 48	37–44	10	60,5	52	64/64	50	1.548.4850.01
PG 48	29–35	10	60,5	52	64/64	50	1.548.4850.15

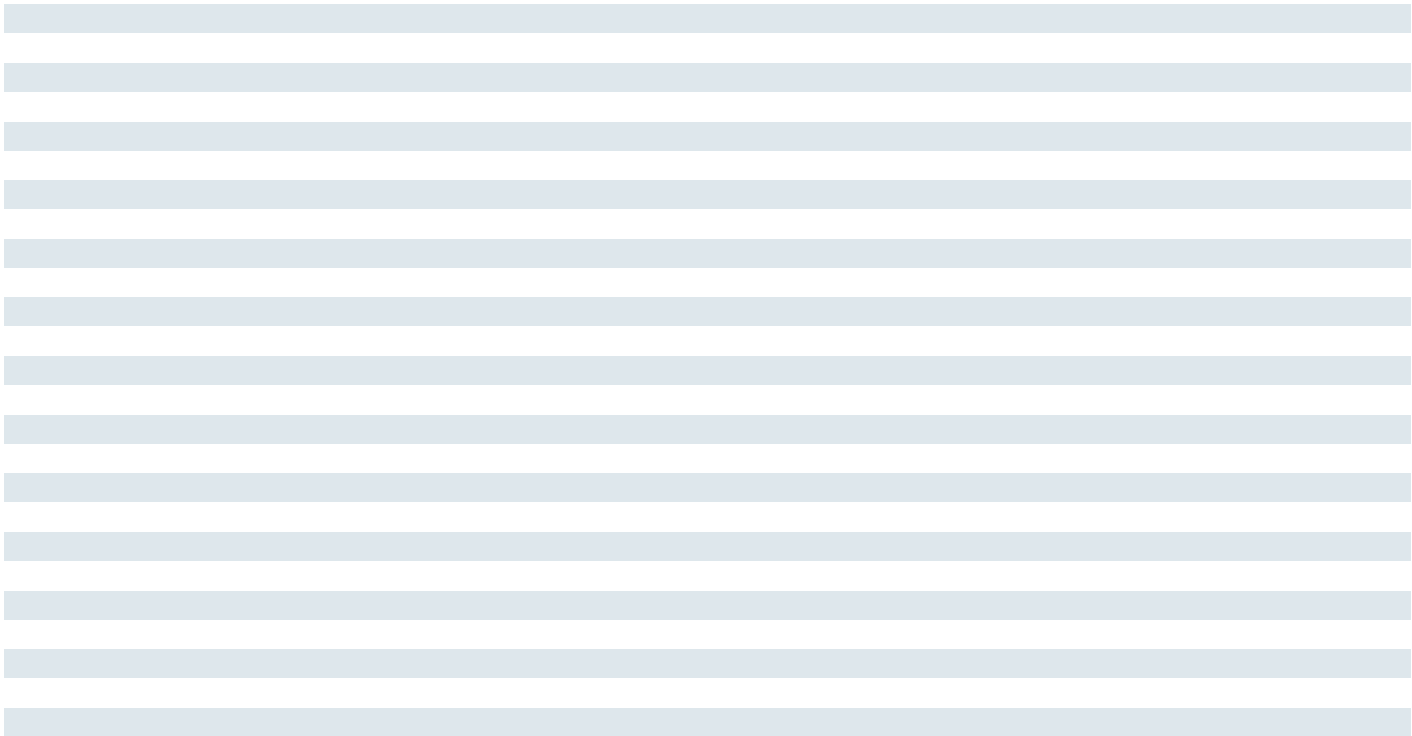
Polyamide-Fitting DUO-MS NPT



Material	Nickel plated brass
Clamping insert	Polyamide
Seal	NBR
Protection category	IP 68 – 10 bar / IP 69K (NEMA 6 – 150 PSIG) on the cable gland
Operating Temperature	-40 °C – +100 °C (-40 °F → +212 °F)



AG	∅ mm	GL mm	H mm	D mm	mm	fits to DN	Number
NPT 1/2"	10–14	13	40,5	29	28/24	14	1.547.1214.70
NPT 1/2"	07–12	13	40,5	29	28/22	14	1.547.1214.71
NPT 3/4"	13–18	13	44,5	30	30/30	17	1.547.3417.70
NPT 3/4"	09–16	13	44,5	30	30/30	17	1.547.3417.71
NPT 1"	18–24	19	50,5	39	40/40	23	1.547.1023.70
NPT 1"	13–20	19	50,5	39	40/40	23	1.547.1023.71



Polyamide-Fitting DUO-PA

Metr., PG



Material	Polyamide
Seal	NBR
Protection category	IP 68 – 10 bar / IP 69K (NEMA 6 – 150 PSIG) on the cable gland
Operating Temperature	-40 °C – +100 °C (-40 °F – +212 °F)
Colours	black (RAL 9005)



Polyamide-Conduit

Polyamide-Fitting

AG	∅ mm	GL mm	H mm	D mm	mm	fits to DN	Number
M 16	05–10	8	40	23	22	10	1.542.1610.50
M 16	03–07	8	40	23	22	10	1.542.1610.51
M 20	06–12	10	44	25	24	12	1.542.2012.50
M 20	05–09	10	44	25	24	12	1.542.2012.51
M 20	10–14	10	46	29	27	14	1.542.2014.50
M 20	07–12	10	46	29	27	14	1.542.2014.51
M 25	13–18	11	50	30	33	17	1.542.2517.50
M 25	09–16	11	50	30	33	17	1.542.2517.51
M 32	18–24	11	60	39	42	23	1.542.3223.50
M 32	13–20	11	60	39	42	23	1.542.3223.51
M 40	22–31	13	69	45	53	29	1.542.4029.50
M 40	20–26	13	69	45	53	29	1.542.4029.51
M 50	32–36	13	74	52	60	37	1.542.5037.50
M 50	25–31	13	74	52	60	37	1.542.5037.51
M 63	37–44	14	79	52	68	50	1.542.6350.50
M 63	29–35	14	79	52	68	50	1.542.6350.51
PG 11	05–10	8	40	23	22	10	1.543.1110.14
PG 11	03–07	8	40	23	22	10	1.543.1110.15
PG 13,5	06–12	9	44	25	24	12	1.543.1312.14
PG 13,5	05–09	9	44	25	24	12	1.543.1312.15
PG 16	10–14	10	47	29	27	14	1.543.1614.14
PG 16	07–12	10	47	29	27	14	1.543.1614.15
PG 21	13–16	11	50	30	33	17	1.543.2117.14
PG 21	09–16	11	50	30	33	17	1.543.2117.15
PG 29	18–22	11	60	39	42	23	1.543.2923.14
PG 29	13–20	11	60	39	42	23	1.543.2923.15
PG 36	22–31	13	69	45	53	29	1.543.3629.14
PG 36	20–26	13	69	45	53	29	1.543.3629.15
PG 42	32–36	13	74	52	60	37	1.543.4237.14
PG 42	25–31	13	74	52	60	37	1.543.4237.15
PG 48	37–44	14	79	52	68	50	1.543.6350.14
PG 48	29–35	14	79	52	68	50	1.543.6350.15

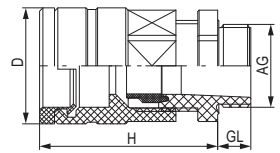
Metal-Conduit / Metal-Fitting

Metal-Conduit Pro / Metal-Fitting Pro

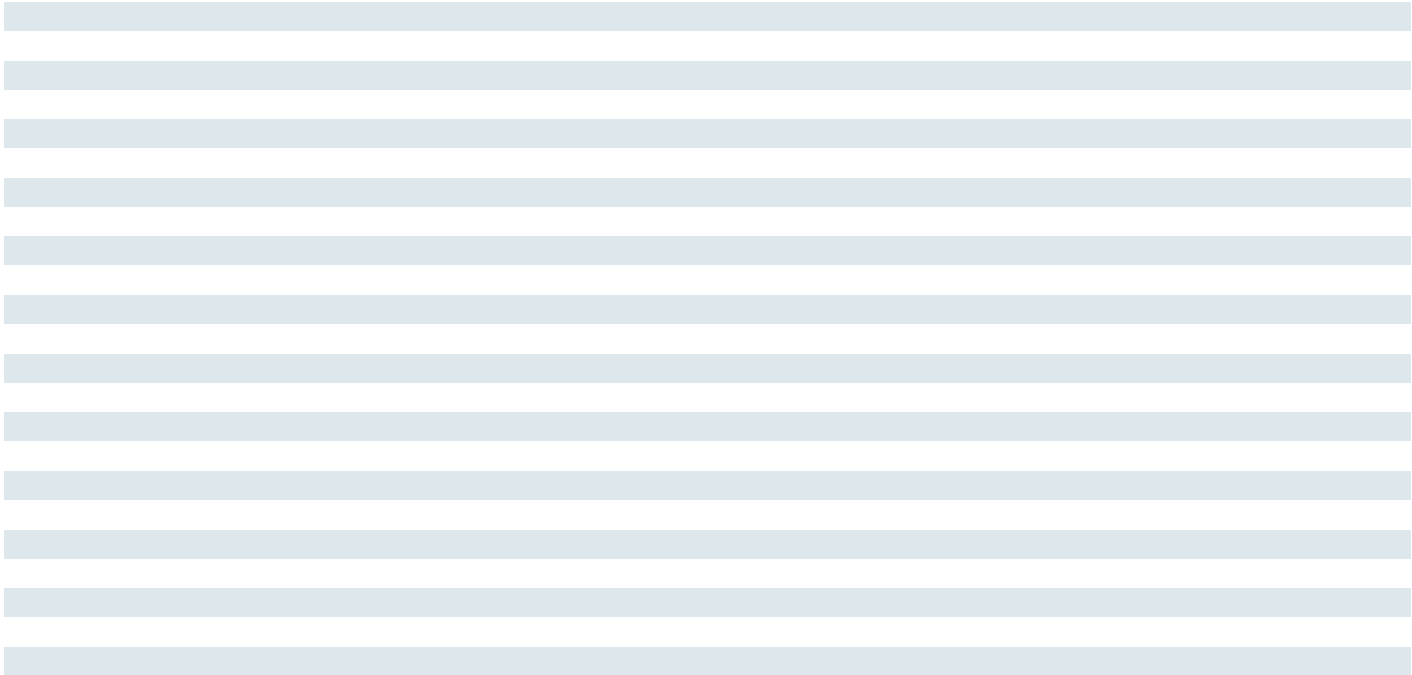
Polyamide-Fitting DUO-PA PT



Material	Polyamide
Seal	NBR
Protection category	IP 68 – 10 bar / IP 69K (NEMA 6 – 150 PSIG) on the cable gland
Operating Temperature	-40 °C – +100 °C (-40 °F – +212 °F)
Colours	black (RAL 9005)



AG	∅ mm	GL mm	H mm	D mm	mm	fits to DN	Number
NPT 1/2"	10–14	13	46	29	27	14	1.542.1214.70
NPT 1/2"	07–12	13	46	29	27	14	1.542.1214.71
NPT 3/4"	13–18	14	50	30	33	17	1.542.3417.70
NPT 3/4"	09–16	14	50	30	33	17	1.542.3417.71
NPT 1"	18–24	19	60	39	42	23	1.542.1023.70
NPT 1"	13–20	19	60	39	42	23	1.542.1023.71
NPT 1 1/2"	22–31	20	69	45	53	29	1.542.6429.70

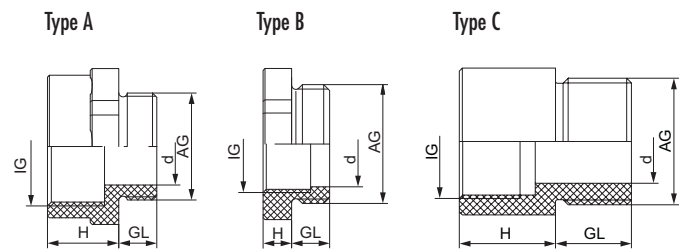


R-M-PA

Metr., PG



Material	Polyamide (Type A / Type B), Polypropylene (Type C)
Operating Temperature	-20 °C – +80 °C (-4 °F – +176 °F)
Colours	black (RAL 9005)



AG	IG mm	Type	d mm	GL mm	H mm	Ø mm	Number
M 16 x 1,5	M 12 x 1,5	B	10	8	6	20	1.273.1612.50
M 20 x 1,5	M 16 x 1,5	B	13,5	8	6	25	1.273.2016.50
M 25 x 1,5	M 20 x 1,5	B	18	8	6	29	1.273.2520.50
M 32 x 1,5	M 25 x 1,5	B	23	10	6	36	1.273.3225.50
M 40 x 1,5	M 32 x 1,5	C	30	15	5		1.273.4032.50
M 50 x 1,5	M 40 x 1,5	C	38	15	5		1.273.5040.50
M 63 x 1,5	M 50 x 1,5	C	48	15	5		1.273.6350.50
M 25 x 1,5	PG 13,5	B	18	8	6	29	1.273.2513.50
M 25 x 1,5	PG 16	A	18	8	14	29	1.273.2516.50
M 32 x 1,5	PG 21	A	25	10	15	36	1.273.3221.50
M 40 x 1,5	PG 29	A	33	10	15	45	1.273.4029.50
M 50 x 1,5	PG 36	A	43	12	17	55	1.273.5036.50
M 63 x 1,5	PG 42	C	52	15	5		1.273.6342.50
PG 9	M 12 x 1,5	C	15	19	8,5		1.273.0912.11
PG 11	M 16 x 1,5	C	15	19	11,5		1.273.1116.11
PG 13,5	M 16 x 1,5	B	25	8	6	14	1.273.1316.11
PG 16	M 20 x 1,5	A	27	8	13	16	1.273.1620.11
PG 21	M 25 x 1,5	C	15	19	20,5		1.273.2125.11
PG 29	M 32 x 1,5	C	15	19	28		1.273.2932.11
PG 36	M 40 x 1,5	C	15	5	38		1.273.3640.11
PG 42	M 40 x 1,5	C	15	5	38		1.273.4240.11
PG 48	M 50 x 1,5	C	15	5	38		1.273.4850.11

Polyamide-Conduit

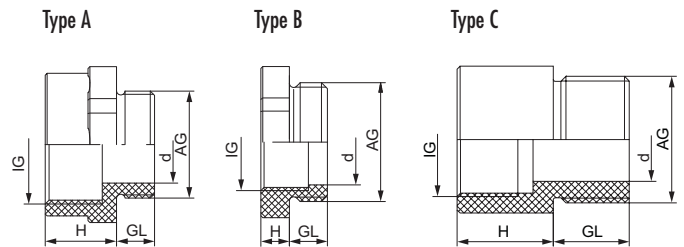
Polyamide-Fitting

Metal-Conduit / Metal-Fitting

Metal-Conduit Pro / Metal-Fitting Pro



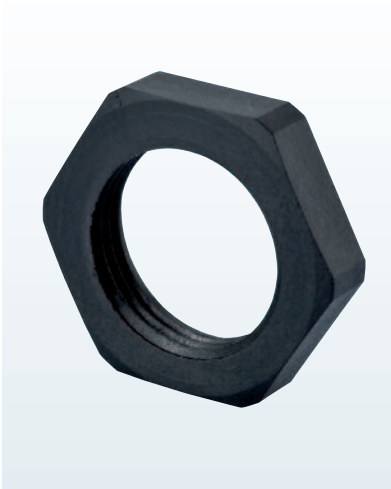
Material	Polyamide (Type A / Type B), Polypropylene (Type C)
Operating Temperature	-20 °C – +80 °C (-4 °F – +176 °F)
Colours	K-FS grey (RAL 7035), E-M-PA black (RAL 9005)



AG	IG mm	Type	d mm	GL mm	H mm	Ø mm	Number
M 12 x 1,5	M 16 x 1,5	A	6,5	8	12	21	1.239.1216.50
M 16 x 1,5	M 20 x 1,5	A	9	8	13	25	1.239.1620.50
M 20 x 1,5	M 25 x 1,5	A	14	8	15	30	1.239.2025.50
M 25 x 1,5	M 32 x 1,5	C	16,5	15	15		1.239.2532.50
M 32 x 1,5	M 40 x 1,5	C	23	15	19,5		1.239.3240.50
M 40 x 1,5	M 50 x 1,5	C	30	15	19,5		1.239.4050.50
M 50 x 1,5	M 63 x 1,5	C	39	15	20		1.239.5063.50
M 12 x 1,5	PG 7	A	6,5	8	12	17	1.239.1207.50
M 16 x 1,5	PG 9	C	8,5	1	19		1.239.1609.50
M 20 x 1,5	PG 13,5	A	14	8	13	25	1.239.2013.50
M 63 x 1,5	PG 48	C	51	15	20		1.239.6348.50
PG 7	M 12 x 1,5	C	6	15	19		1.239.0712.11
PG 9	M 16 x 1,5	A	9	8	12	21	1.239.0916.11
PG 11	M 20 x 1,5	C	11,5	15	19		1.239.1120.11
PG 13,5	M 20 x 1,5	A	14	8	13	25	1.239.1320.11
PG 16	M 25 x 1,5	A	16	8	15	30	1.239.1625.11
PG 21	M 32 x 1,5	A	21	8	15	37	1.239.2132.11
PG 29	M 40 x 1,5	A	30	10	17	45	1.239.2940.11
PG 36	M 50 x 1,5	C	37	15	19,5		1.239.3650.11
PG 42	M 50 x 1,5	C	43	15	19,5		1.239.4250.11
PG 48	M 63 x 1,5	C	48	15	20		1.239.4863.11
PG 11	PG 13,5	B	12,5	8	15	24	1.233.1113.11
PG 13,5	PG 16	B	15	9	16	27	1.233.1316.11
PG 16	PG 21	B	16	10	19	32	1.233.1621.11
PG 21	PG 29	B	22,5	11	21	42	1.233.2129.11

R-M-PA

Metr., PG

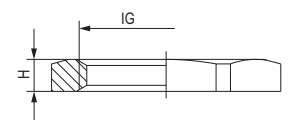


Material Polyamide VO according to UL 94

Operating Temperature -40 °C – +100 °C (-40 °F – +212 °F)

Colours grey (RAL 7035), black (RAL 9005)

Advice:
// other colors upon request



IG	H mm	mm	Number PA VO grey	Number PA VO black
M 12 x 1,5	5	17	1.262.1200.50	1.262.1201.50
M 16 x 1,5	5	22	1.262.1600.50	1.262.1601.50
M 20 x 1,5	6	27	1.262.2000.50	1.262.2001.50
M 25 x 1,5	6,5	32	1.262.2500.50	1.262.2501.50
M 32 x 1,5	7	41	1.262.3200.50	1.262.3201.50
M 40 x 1,5	7	50	1.262.4000.50	1.262.4001.50
M 50 x 1,5	8	60	1.262.5000.50	1.262.5001.50
M 63 x 1,5	8	75	1.262.6300.50	1.262.6301.50
PG 7	5	19	1.262.0700.11	1.262.0701.11
PG 9	5	22	1.262.0900.11	1.262.0901.11
PG 11	5	24	1.262.1100.11	1.262.1101.11
PG 13,5	6	27	1.262.1300.11	1.262.1301.11
PG 16	6	30	1.262.1600.11	1.262.1601.11
PG 21	7	36	1.262.2100.11	1.262.2101.11
PG 29	7	46	1.262.2900.11	1.262.2901.11
PG 36	8	60	1.262.3600.11	1.262.3601.11
PG 42	8	65	1.262.4200.11	1.262.4201.11
PG 48	8	70	1.262.4800.11	1.262.4801.11
NPT 3/8"	7	24	1.262.3800.70	1.262.3801.70
NPT 1/2"	6	27	1.262.1200.70	1.262.1201.70
NPT 3/4"	7	32	1.262.3400.70	1.262.3401.70
NPT 1"	7	40	1.262.1000.70	1.262.1001.70

Polyamide-Conduit

Polyamide-Fitting

Metal-Conduit / Metal-Fitting

Metal-Conduit Pro / Metal-Fitting Pro



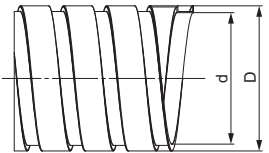
METAL CABLE CONDUIT

Metal-Conduit A

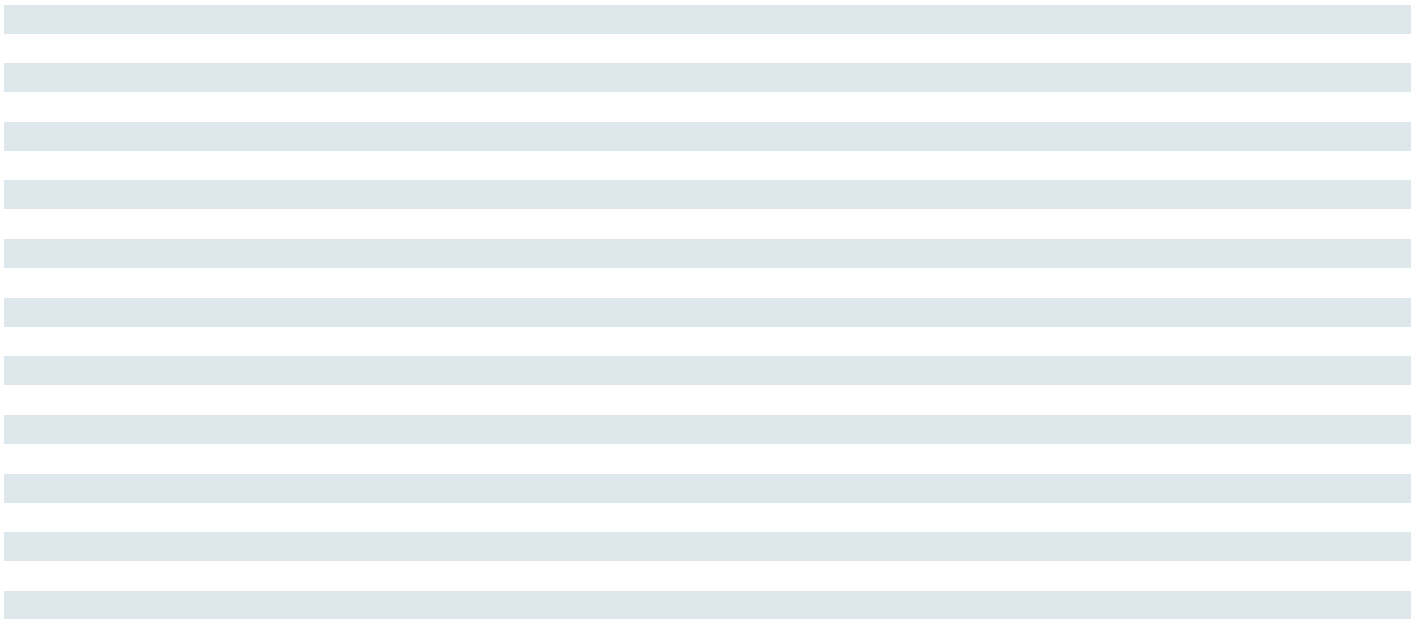


Material	galvanised steel
Protection category	IP 40
Operating Temperature	-100 °C – +300 °C (-148 °F – +572 °F)

RoHS



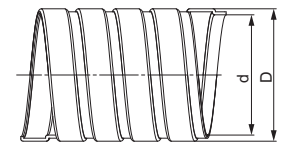
Size DN	d mm	D mm	R mm	Number
7	7,5	10,5	25	1.560.0760.00
9	9	12	30	1.560.0960.00
11	11	14	30	1.560.1160.00
14	14	17	40	1.560.1460.00
16	16	19	45	1.560.1660.00
21	21	24	55	1.560.2160.00
26	26	30	55	1.560.2660.00
37	37	41	80	1.560.3760.00
40	40	44	80	1.560.4060.00
51	51	55	90	1.560.5160.00





Material	galvanised steel, PVC coating
Protection category	IP 65
Operating Temperature	-15 °C – +70 °C (+5 °F – +158 °F)

RoHS



Size DN	d mm	D mm	R mm	Number
7	7,5	11,5	25	1.561.0761.00
9	9	13	30	1.561.0961.00
11	11	15	30	1.561.1161.00
14	14	18	40	1.561.1461.00
16	16	20	45	1.561.1661.00
21	21	25	55	1.561.2161.00
26	26	31	55	1.561.2661.00
37	37	42	80	1.561.3761.00
40	40	45	80	1.561.4061.00
51	51	56	90	1.561.5161.00

Polyamide-Conduit

Polyamide-Fitting

Metal-Conduit / Metal-Fitting

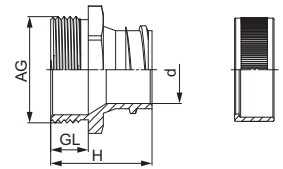
Metal-Conduit Pro / Metal-Fitting Pro

Metal-Fitting

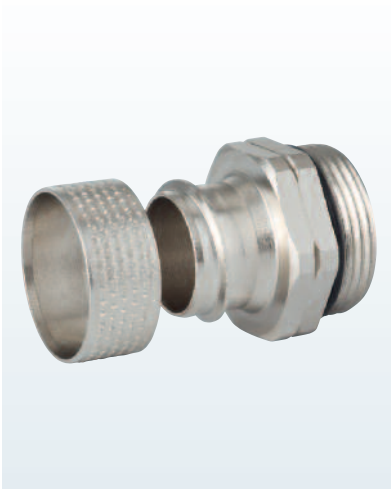


Material	Nickel plated brass
Protection category	IP 54
Operating Temperature	-20 °C – +80 °C (-4 °F – +176 °F)

RoHS

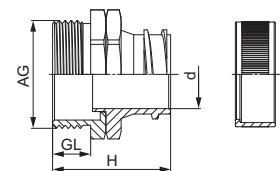



AG	d mm	GL mm	H mm	mm	fits to DN	Number
M 12	6	8	24	15	7	1.570.1260.50
M 16	7	8	24	20	9	1.570.1660.51
M 16	9	10	26	20	11	1.570.1660.50
M 20	12	10	26	22	14	1.570.2060.51
M 20	14	10	26	22	16	1.570.2060.50
M 25	18	10	27	28	21	1.570.2560.50
M 32	23	12	31	35	26	1.570.3260.50
M 40	33,5	14	36	45	37	1.570.4060.50
M 50	37	14	36	55	40	1.570.5060.50
M 63	46	14	36	65	51	1.570.6360.50
PG 7	6	8	24	15	7	1.570.0760.14
PG 9	7	8	24	17	9	1.570.0960.14
PG 11	9	10	26	20	11	1.570.1160.14
PG 13,5	12	10	26	22	14	1.570.1360.14
PG 16	14	10	26	24	16	1.570.1660.14
PG 21	18	10	27	30	21	1.570.2160.14
PG 29	23	12	31	40	26	1.570.2960.14
PG 36	33,5	14	36	50	37	1.570.3660.14
PG 42	37	14	36	60	40	1.570.4260.14
PG 48	46	14	36	65	51	1.570.4860.14
NPT 1/4"	6	10	26	15	7	1.570.1460.70
NPT 3/8"	7	11,5	27,5	20	9	1.570.3860.71
NPT 3/8"	9	11,5	27,5	20	11	1.570.3860.70
NPT 1/2"	12	13	29	22	14	1.570.1260.71
NPT 1/2"	14	13	29	22	16	1.570.1260.70
NPT 3/4"	18	15	32	28	21	1.570.3460.70
NPT 1"	23	15	34	35	26	1.570.1060.70
NPT 1 1/4"	33,5	16	38	45	37	1.570.5460.70
NPT 1 1/2"	37	18	40	55	40	1.570.6460.70
NPT 2"	46	20	42	65	51	1.570.2060.70



Material	Nickel plated brass
Protection category	IP 54
Operating Temperature	-20 °C – +80 °C (-4 °F – +176 °F)

RoHS



AG	d mm	GL mm	H mm	 mm	fits to DN	Number
M 12	6	8	27	15	7	1.571.1260.50
M 16	7	8	27	20	9	1.571.1660.51
M 16	9	10	29	20	11	1.571.1660.50
M 20	12	10	29	22	14	1.571.2060.51
M 20	14	10	29	22	16	1.571.2060.50
M 25	18	10	31	28	21	1.571.2560.50
M 32	23	12	35	35	26	1.571.3260.50
M 40	33,5	14	41	45	37	1.571.4060.50
M 50	37	14	41	55	40	1.571.5060.50
M 63	46	14	41	65	51	1.571.6360.50
PG 7	6	8	27	15	7	1.571.0760.14
PG 9	7	8	27	17	9	1.571.0960.14
PG 11	9	10	29	20	11	1.571.1160.14
PG 13,5	12	10	29	22	14	1.571.1360.14
PG 16	14	10	29	24	16	1.571.1660.14
PG 21	18	10	31	30	21	1.571.2160.14
PG 29	23	12	35	40	26	1.571.2960.14
PG 36	33,5	14	41	50	37	1.571.3660.14
PG 42	37	14	41	60	40	1.571.4260.14
PG 48	46	14	41	65	51	1.571.4860.14
NPT 1/4"	6	10	29	15	7	1.571.1460.70
NPT 3/8"	7	11,5	30,5	20	9	1.571.3860.71
NPT 3/8"	9	11,5	30,5	20	11	1.571.3860.70
NPT 1/2"	12	13	32	22	14	1.571.1260.71
NPT 1/2"	14	13	32	22	16	1.571.1260.70
NPT 3/4"	18	15	36	28	21	1.571.3460.70
NPT 1"	23	15	39	35	26	1.571.1060.70
NPT 1 1/4"	33,5	16	43	45	37	1.571.5460.70
NPT 1 1/2"	37	18	45	55	40	1.571.6460.70
NPT 2"	46	20	47	65	51	1.571.2060.70



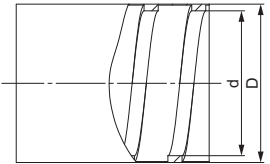
METAL CABLE CONDUIT

Metal-Conduit Pro A

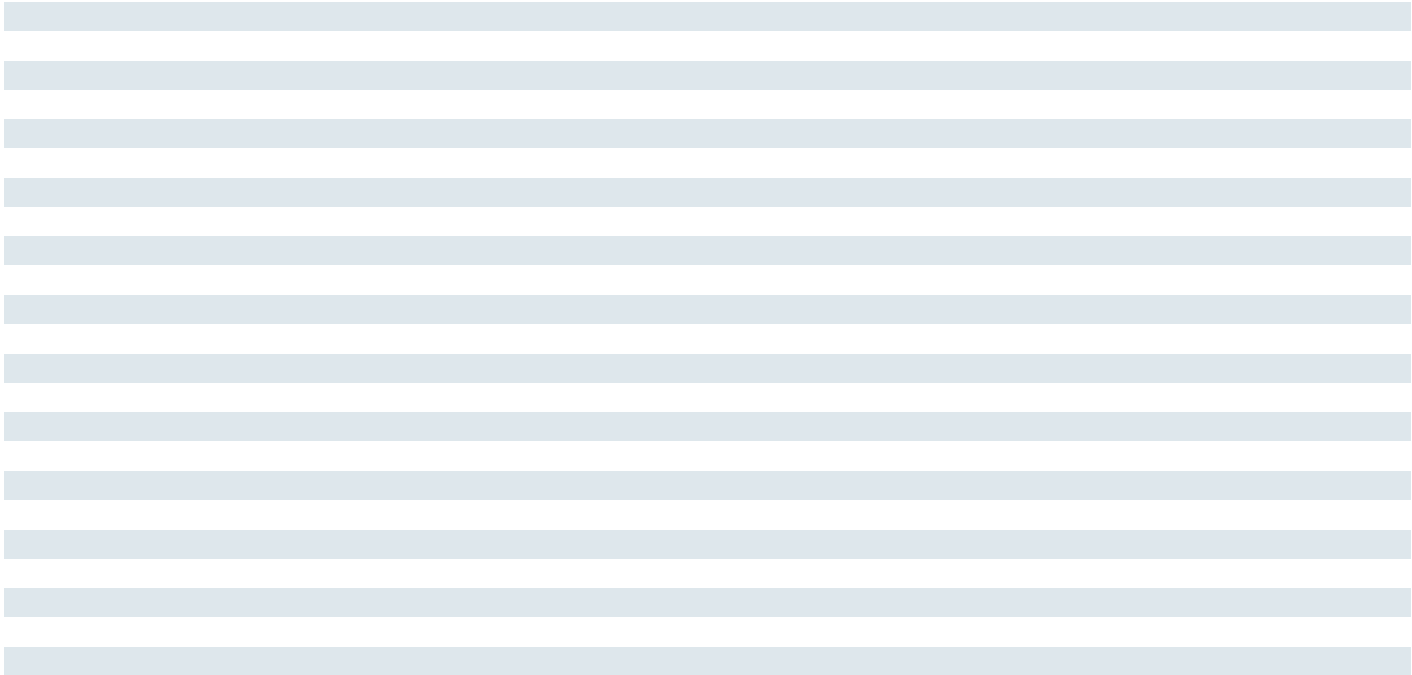


Material	galvanised steel, PVC coating
Protection category	IP 66
Operating Temperature	-20 °C – +105 °C (-4 °F – +221 °F)

RoHS



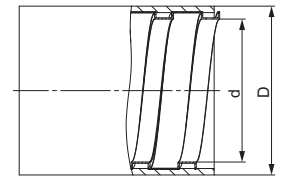
Size DN	d mm	D mm	R mm	Number
10	10,3	16	40	1.562.1061.00
12	12,3	18	45	1.562.1261.00
16	15,5	21	65	1.562.1661.00
21	20,9	26,5	100	1.562.2161.00
27	26,5	33,3	135	1.562.2761.00
35	35	42	175	1.562.3561.00
40	40	48,2	230	1.562.4061.00
51	51,5	60	280	1.562.5161.00



RoHS



Material	galvanised steel
Protection category	IP 40
Operating Temperature	-100 °C – +300 °C (-148 °F – +572 °F)



Size DN	d mm	D mm	R mm	Number
9	9	14	30	1.563.0960.00
11	11	16	35	1.563.1160.00
13	13	17,5	40	1.563.1360.00
16	16	21	45	1.563.1660.00
21	21	26	55	1.563.2160.00
26	26	32	70	1.563.2660.00
35	35	41	80	1.563.3560.00
40	40	46	90	1.563.4060.00
51	51	57	90	1.563.5160.00

Polyamide-Conduit

Polyamide-Fitting

Metal-Conduit / Metal-Fitting

Metal-Conduit Pro / Metal-Fitting Pro

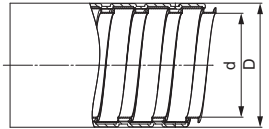
METAL CABLE CONDUIT

Metal-Conduit Pro C



Material	galvanised steel
Protection category	IP 65
Operating Temperature	-15 °C – +70 °C (+5 °F – +158 °F)

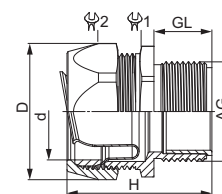
RoHS



Size DN	d mm	D mm	R mm	Number
9	9	15	30	1.564.0960.00
11	11	17	35	1.564.1160.00
13	13	18,5	40	1.564.1360.00
16	16	22	45	1.564.1660.00
21	21	27	55	1.564.2160.00
26	26	33	70	1.564.2660.00
35	35	42	80	1.564.3560.00
40	40	47	90	1.564.4060.00
51	51	58	90	1.564.5160.00



Material	Nickel plated brass
Protection category	IP 67
Operating Temperature	-20 °C – +80 °C (-4 °F – +176 °F)



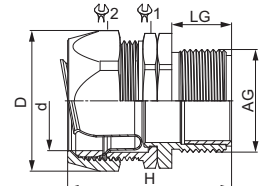
AG	d mm	D mm	GL mm	H mm	1 mm	2 mm	fits to Pro A, B, C	Number
M 12	16,5	24,5	10	31	20	22	-/09	1.572.1260.50
M 16	19	29,2	10	35	24	26	11/12	1.572.1660.51
M 16	22	32,6	11,5	39	27	29	12/13	1.572.1660.50
M 20	22	32,6	13	38,7	27	29	16	1.572.2060.50
M 25	27,5	38,8	15	41	33	35	21	1.572.2560.50
M 32	34,5	50	15	49	43	45	26/27	1.572.3260.50
M 40	43,5	60	16	51	52	54	35	1.572.4060.50
M 50	49,5	69,3	18	61	60	63	40	1.572.5060.50
M 63	62	85	20	73	74	77	51	1.572.6360.50
PG 7	16,5	24,5	10	31	20	22	-/09	1.572.0760.14
PG 9	16,5	24,5	10	31	20	22	11/12	1.572.0960.14
PG 11	19	29,2	11,5	35	24	26	12/13	1.572.1160.14
PG 13,5	22	32,6	13	39	27	29	16	1.572.1360.14
PG 16	22	32,6	13	38,7	27	29	16	1.572.1660.14
PG 21	27,5	38,8	15	41	33	35	21	1.572.2160.14
PG 29	34,5	50	15	49	43	45	26/27	1.572.2960.14
PG 36	43,5	60	16	51	52	54	35	1.572.3660.14
PG 42	49,5	69,3	18	61	60	63	40	1.572.4260.14
PG 48	62	85	20	73	74	77	51	1.572.4860.14
NPT 1/4"	16,5	24,5	10	31	20	22	10/11	1.572.1460.70
NPT 3/8"	19	29,2	11,5	35	20	22	12/13	1.572.3860.70
NPT 1/2"	22	32,6	13	38,7	27	29	16	1.572.1260.70
NPT 3/4"	27,5	38,8	15	41	33	35	21	1.572.3460.70
NPT 1"	34,5	50	15	49	43	45	27/26	1.572.1060.70
NPT 1 1/4"	43,5	60	16	51	52	54	35	1.572.5460.70
NPT 1 1/2"	49,5	69,3	18	61	60	63	40	1.572.6460.70
NPT 2"	62	85	20	73	74	77	51	1.572.2060.70

Metal-Fitting Pro S



Material	Nickel plated brass
Protection category	IP 67
Operating Temperature	-20 °C – +80 °C (-4 °F – +176 °F)

RoHS



AG	d mm	D mm	GL mm	H mm	1 mm	2 mm	fits to Pro A, B, C	Number
M 12	16,5	24,5	10	34	20	22	-/09	1.573.1260.50
M 16	16,5	24,5	10	35	20	22	10/11	1.573.1660.51
M 16	19	29,2	10	37	20	22	12/13	1.573.1660.50
M 20	22	32,6	13	41	27	29	16	1.573.2060.50
M 25	27,5	38,8	15	44	33	35	21	1.573.2560.50
M 32	34,5	50	15	51	43	45	27/26	1.573.3260.50
M 40	43,5	60	16	54	52	54	35	1.573.4060.50
M 50	49,5	69,3	18	64	60	63	40	1.573.5060.50
M 63	62	85	20	76	74	77	51	1.573.6360.50
PG 7	16,5	24,5	10	34	20	22	-/09	1.573.0760.14
PG 9	16,5	24,5	10	34	20	22	10/11	1.573.0960.14
PG 11	19	29,2	11,5	35	24	26	12/13	1.573.1160.14
PG 13,5	22	32,6	13	37	27	29	16	1.573.1360.14
PG 16	22	32,6	13	41	27	29	16	1.573.1660.14
PG 21	27,5	38,8	15	44	33	35	21	1.573.2160.14
PG 29	34,5	50	15	51	43	45	27/26	1.573.2960.14
PG 36	43,5	60	16	54	52	54	35	1.573.3660.14
PG 42	49,5	69,3	18	64	60	63	40	1.573.4260.14
PG 48	62	85	20	76	74	77	51	1.573.4860.14
NPT 1/4"	16,5	24,5	10	35	20	22	10/11	1.573.1460.70
NPT 3/8"	19	29,2	11,5	37	20	22	12/13	1.573.3860.70
NPT 1/2"	22	32,6	13	41	27	29	16	1.573.1260.70
NPT 3/4"	27,5	38,8	15	44	33	35	21	1.573.3460.70
NPT 1"	34,5	50	15	51	43	45	26/27	1.573.1060.70
NPT 1 1/4"	43,5	60	16	54	52	54	35	1.573.5460.70
NPT 1 1/2"	49,5	69,3	18	64	60	63	40	1.573.6460.70
NPT 2"	62	85	20	76	74	77	51	1.573.2060.70

Metal-Fitting Clip



Material Metal

RoHS

Polyamide-Conduit

Polyamide-Fitting

Size DN	fits to DN	Number
7	07 / - / -	1.574.0760.00
9	09 / - / -	1.574.0960.00
11	11 / - / -	1.574.1160.00
14	11 / - / -	1.574.1460.00
16	16 / 16 / 16	1.574.1660.00
21	21 / 21 / 21	1.574.2160.00
26 / 27	- / 27 / 26	1.574.2660.00
35	35 / 35 / 35	1.574.3560.00
51	51 / - / -	1.574.5160.00

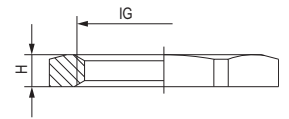
Metal-Conduit / Metal-Fitting

Metal-Conduit Pro / Metal-Fitting Pro

GM-Ms



Material	Nickel plated brass
Protection category	IP 68 – 10 bar / IP 69K on der Kabelverschraubung
Operating Temperature	-40 °C – +100 °C (-40 °F – +212 °F)



IG	H mm	mm	Number
M 12 x 1,5	2,8	15	1.161.1200.50
M 16 x 1,5	2,8	19	1.161.1600.50
M 20 x 1,5	3,0	23	1.161.2000.50
M 25 x 1,5	3,5	29	1.161.2500.50
M 32 x 1,5	4,0	36	1.161.3200.50
M 40 x 1,5	4,5	45	1.161.4000.50
M 50 x 1,5	5,5	55	1.161.5000.50
M 63 x 1,5	6,0	70	1.161.6300.50
PG 7	2,8	15	1.161.0700.01
PG 9	2,8	18	1.161.0900.01
PG 11	3,0	21	1.161.1100.01
PG 13,5	3,0	23	1.161.1300.01
PG16	3,0	26	1.161.1600.01
PG 21	3,5	32	1.161.2100.01
PG 29	4,0	41	1.161.2900.01
PG 36	5,0	51	1.161.3600.01
PG 42	5,0	60	1.161.4200.01
PG 48	5,5	64	1.161.4800.01

Архангельск (8182)63-90-72
Астана (7172)727-132
Астрахань (8512)99-46-04
Барнаул (3852)73-04-60
Белгород (4722)40-23-64
Брянск (4832)59-03-52
Владивосток (423)249-28-31
Волгоград (844)278-03-48
Вологда (8172)26-41-59
Воронеж (473)204-51-73
Екатеринбург (343)384-55-89
Иваново (4932)77-34-06

Ижевск (3412)26-03-58
Иркутск (395)279-98-46
Казань (843)206-01-48
Калининград (4012)72-03-81
Калуга (4842)92-23-67
Кемерово (3842)65-04-62
Киров (8332)68-02-04
Краснодар (861)203-40-90
Красноярск (391)204-63-61
Курск (4712)77-13-04
Липецк (4742)52-20-81
Киргизия (996)312-96-26-47

Магнитогорск (3519)55-03-13
Москва (495)268-04-70
Мурманск (8152)59-64-93
Набережные Челны (8552)20-53-41
Нижний Новгород (831)429-08-12
Новокузнецк (3843)20-46-81
Новосибирск (383)227-86-73
Омск (3812)21-46-40
Орел (4862)44-53-42
Оренбург (3532)37-68-04
Пенза (8412)22-31-16
Россия (495)268-04-70

Пермь (342)205-81-47
Ростов-на-Дону (863)308-18-15
Рязань (4912)46-61-64
Самара (846)206-03-16
Санкт-Петербург (812)309-46-40
Саратов (845)249-38-78
Севастополь (8692)22-31-93
Симферополь (3652)67-13-56
Смоленск (4812)29-41-54
Сочи (862)225-72-31
Ставрополь (8652)20-65-13
Казахстан (772)734-952-31

Сургут (3462)77-98-35
Тверь (4822)63-31-35
Томск (3822)98-41-53
Тула (4872)74-02-29
Тюмень (3452)66-21-18
Ульяновск (8422)24-23-59
Уфа (347)229-48-12
Хабаровск (4212)92-98-04
Челябинск (351)202-03-61
Череповец (8202)49-02-64
Ярославль (4852)69-52-93

www.hummel.nt-rt.ru || hma@nt-rt.ru